

RESOLUTION NO. 24-24

A RESOLUTION TO APPROVE A PETITION FOR ANNEXATION OF LOTS 2R, 3, AND 4 OF BIG B'S SUBDIVISION TO THE CITY OF BOX ELDER, MEADE COUNTY, SOUTH DAKOTA

WHEREAS, the City of Box Elder has received a written petition for voluntary annexation signed by not less than three-fourths of the registered voters and by the owners of not less than three-fourths of the value of the territory sought to be annexed to the municipality; and

WHEREAS, certain territory, hereinafter more particularly described, is contiguous to the City of Box Elder, South Dakota; and

WHEREAS, the Common Council of the City of Box Elder deems that said area be annexed thereto as follows:

Lot 3 of Big B's Subdivision as part of the General Commercial Zoning District; and

Portions of Lot 2 of Big B's Subdivision to be known in future as Lots 2R and 4 of Big B's Subdivision as part of the General Residential 1 Zoning District.

NOW, THEREFORE, BE IT RESOLVED by the Common Council of the City of Box Elder, that the boundaries of said City of Box Elder, South Dakota, be and they hereby are extended to include the area contiguous to the City of Box Elder, described as follows:

Lot 3 of Big B's Subdivision, Portions of Lot 2 of Big B's Subdivision to be known in future as Lots 2R and 4 of Big B's Subdivision, and adjacent Tower Road right-of-way, Section 8, T2N, R9E, B.H.M., Meade County, South Dakota.

PASSED, APPROVED AND ADOPTED this 12th day of November, 2024.

Larry Larson, Mayor

ATTEST:

Nicole Schneider, Chief Financial Officer, City Administrator



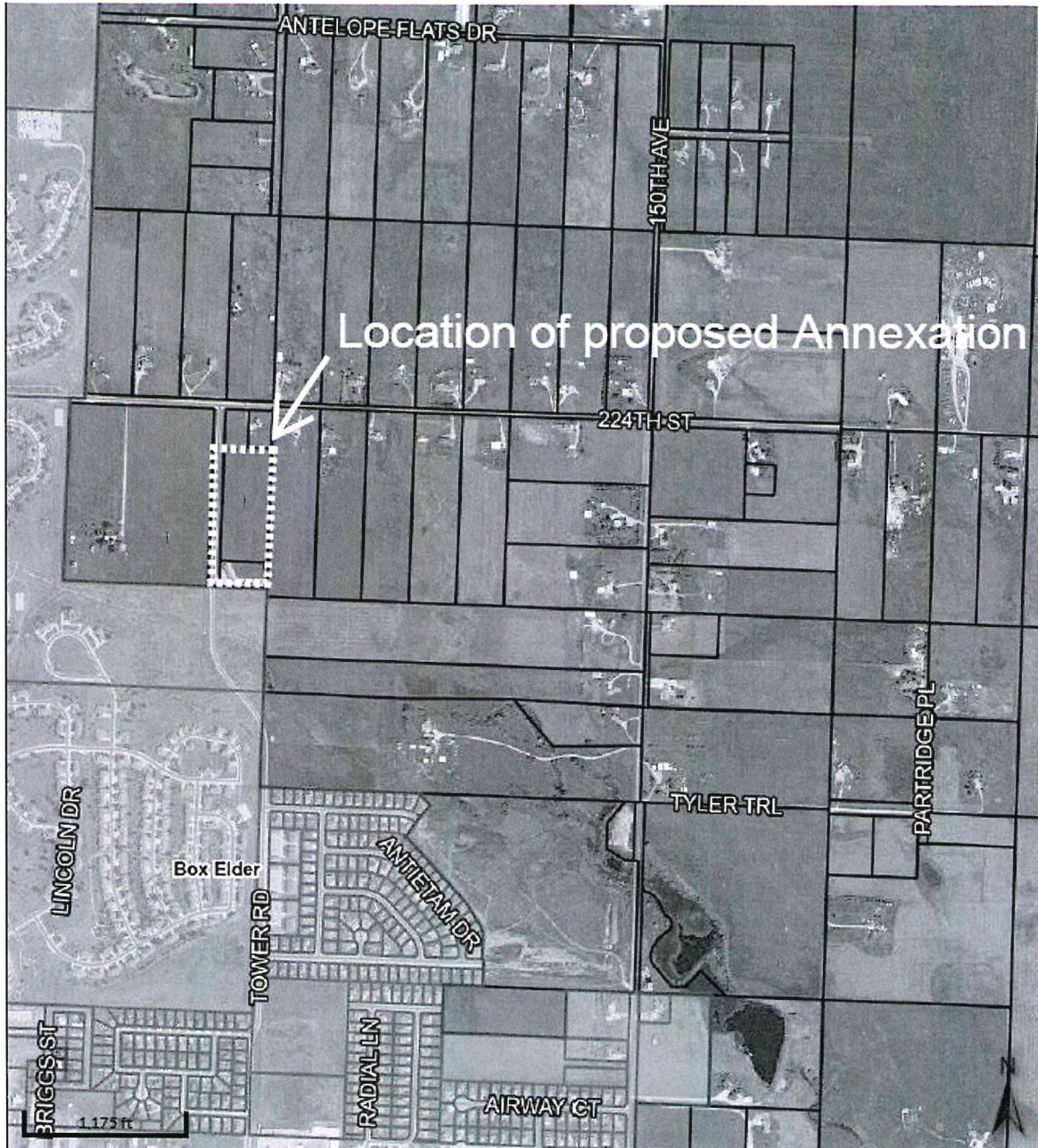
ATTESTATION

I, Chaz Kokesh, the City Clerk of the City of Box Elder, South Dakota, do hereby attest and state the above resolution was published on November 19, 2024 in the manner required by law and that all procedures required by the State of South Dakota law were complied with. This resolution shall become effective on the twentieth day after its publication, that date being: December 9, 2024.



Chaz Kokesh, City Clerk

CITY OF BOX ELDER RESOLUTION NO. 24-24 EXHIBIT



Annexation Location:

Parcel ID: 32.80.03 & Portions of 32.80.02

Legally Described as: Lot 3 of Big B's Subdivision, Portions of Lot 2 of Big B's Subdivision to be known in future as Lots 2R and 4 of Big B's Subdivision, and adjacent Tower Road right-of-way, Section 8, T2N, R9E, B.H.M., Meade County, South Dakota.